



50ml Variable Semi-Auto Injector WITH LUER LOCK

njphillips.com

The 50ml Semi-Automatic Injector is designed for the administration of most vaccines and injectable solutions to livestock.

As components in this instrument may be affected by solvents in some commonly used farm chemicals no responsibility will be accepted by the manufacturer should the instrument be used with such products.

INSTRUCTIONS FOR USE

A. Sterilization

It is essential that this instrument and a supply of needles be thoroughly sterilized before each use. A common method of sterilization is as follows:

1. Draw hot water into the cylinder.
2. Suspend complete instrument in a container of water and boil together with the needles, for 10 to 20 minutes.
3. Remove instrument from container, wrap cloth around the handle and pump dry.

NOTE: Suspending the handpiece not only makes it easier to remove but also prevents damage should the container boil dry. Chemical sterilization with antiseptic solutions is sometimes practised and in such circumstances the recommendations of the chemical manufacturer should be followed. Do not attempt to sterilize by autoclaving.

B. Filling

Before filling from a rubber-sealed glass bottle or vaccine pack, ensure that the lock (item 14) is positioned fully back to disengage the ratchet, allowing the push rod to move freely in either direction.

IMPORTANT: Withdraw push rod fully, expel all air and set injector to the required maximum capacity.

Fit needle to syringe and pierce rubber bung on inverted bottle. Introduce air into bottle by pushing the end knob button (item 17) on push rod. Then, keeping bottle inverted, draw liquid into the cylinder. Repeat this procedure until the syringe is fully charged. Presence of excessive air bubbles indicates an air leak in the instrument or incorrect filling technique.

WARNING: Care must be taken to ensure the liquid does NOT come into contact with any part of the operators body. Chemicals may cause injury to the operator.

CARE AND MAINTENANCE

AFTER USE

1. Remove all traces of material from syringe by flushing thoroughly with a hot water detergent mix. Follow with clean, warm water.
2. Lubricate piston by unscrewing the cylinder and placing a small quantity of NJ Phillips lubrication oil onto the 'O' ring.
3. Place a few drops of NJ Phillips lubrication oil on all moving parts.
4. When replacing the cylinder, make sure that the push rod is fully back for ease of location, otherwise damage to the cylinder could occur.

REPLACING PISTON RING

Should it become necessary to replace the piston seal ring, the subsequent procedure must be followed.

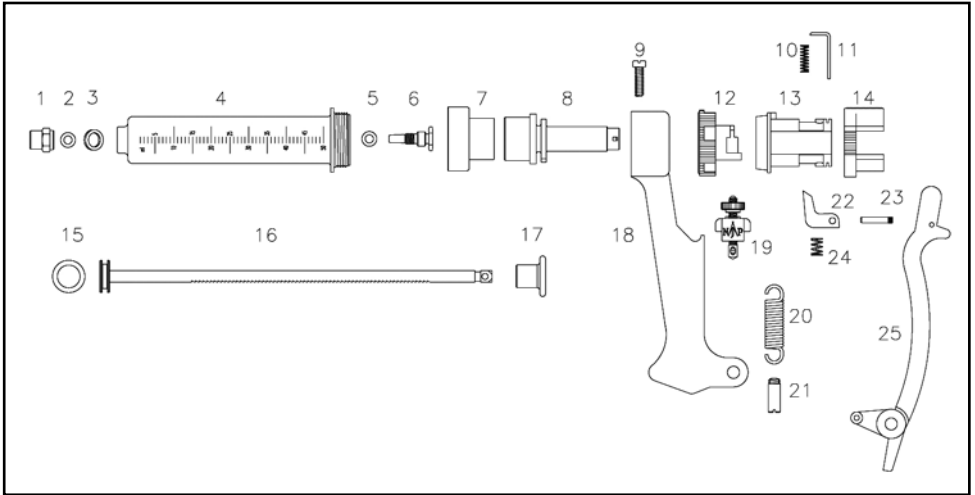
1. Pull push rod fully back.
2. Unscrew cylinder from cylinder support.
3. Remove worn 'O' ring from piston, taking care not to damage the groove.
4. Lubricate new ring with NJ Phillips lubrication oil and fit to piston.
5. Replace cylinder as directed in Care and Maintenance.

IMPORTANT

Do not attempt to dismantle the dose adjustor assembly as this should never be necessary.

LEGEND:

1. Luer Lock Needle Nut, 2. Needle Nut Seal Ring, 3. Fibre Seal Washer,
4. Cylinder, 5. Delivery Cage Seal Ring, 6. Luer Lock Mount Delivery Cage,
7. Cylinder Support, 8. Push Rod Guide, 9. Handle Clamp Screw, 10. Ratchet Plate Spring,
11. Ratchet Plate, 12. Dose Adjustor, 13. Dose Adjustor Locking Sleeve,
14. Release Locking Ring, 15. Piston Seal Ring, 16. Push Rod Assembly, 17. Push Rod End Knob,
18. Handle, 19. Return Spring Adjustor Assembly, 20. Return Spring, 21. Lever Pivot Screw,
22. Operating Pawl, 23. Pawl Pivot Pin, 24. Pawl Return Spring, 25. Lever.



PLEASE ORDER BY KIT AND PART NAME.

<u>KIT No.</u>	<u>PART NAME</u>	<u>INCLUDES ITEM No.</u>
WX1111	Cylinder & Delivery Cage Assembly	1,2,3,4,5,6,15.
WX1112	Push Rod & Piston Assembly.	15,16,17.
WX1115	Dose Adjustor Assembly	8,10,11,12,13,14.
WX998	Trunnion & Spring Assembly	19,20,21.
WX1116	Service Kit	2,3,5,10,15,20,24.

Spare parts available from your local stockist.

AS OUR POLICY IS ONE OF CONTINUOUS IMPROVEMENT THE MANUFACTURER RESERVES THE RIGHT TO ALTER THESE SPECIFICATIONS AT ANY TIME. ALL PRODUCTS PRODUCED BY NJ PHILLIPS PTY LIMITED, ARE IDENTIFIED BY A UNIQUE BATCH NUMBER. THIS IDENTIFICATION NUMBER IS AFFIXED TO THE PRODUCT TO ALLOW TRACEABILITY BY THE MANUFACTURER AND MUST NOT BE REMOVED IF PRODUCT INTEGRITY IS TO BE MAINTAINED.



NJ PHILLIPS Pty Limited ABN 36 000 082 002

POSTAL ADDRESS: LOCKED BAG 8 GOSFORD NSW 2250 AUSTRALIA

TELEPHONE: +61 2 4340 2044 **FAX:** +61 2 4340 1991

EMAIL: njp1@njphillips.com.au



MADE IN AUSTRALIA

njphillips.com

QL142-R10