

# 20ml Variable Forestry / Marine Applicator

njphillips.com

The NJ Phillips 20ml Forestry / Marine Applicator has been designed for the administration of most forestry solutions and for the use in the control of crown-of-thorns starfish.

As components in this applicator may be affected by solvents in certain formulations no responsibility will be accepted by the manufacturer should the applicator be unable to operate with such products.

## BEFORE USE

### Always read the label.

Check the label on the manufacturer's container for dose rates, precautions, and safety information prior to use.

### Use only the recommended dose rate.

Use only the manufacturer's recommended rates. Refer to the manufacturer's dose rate chart or specification. NJ Phillips Pty Limited will take no responsibility if the applicator is used for any other purpose than specified or used contrary to the manufacturer's dose rate specifications.

### Check the applicator.

Before each use, the nozzle should be inspected to ensure plating is not damaged or worn to a sharp edge. Should this occur, smooth with a file or emery paper or replace the nozzle.

## INSTRUCTIONS FOR USE

### Preparing the applicator.

Attach connecting tube to both the hand piece and draw off system. Make sure the springs provided are screwed over the feed tube in an anti-clockwise direction. This will prevent the tube from kinking at these points. To attach nozzle, unscrew nozzle nut (item 1) and fit nozzle to handpiece, replace nozzle nut and tighten.

### Priming the applicator.

To prime, set to maximum dose and actuate the applicator by depressing lever quickly until material is drawn into the cylinder. Expel all air by holding the applicator in a **vertical position**, with the nozzle pointed upwards until both cylinder and nozzle are full.

**WARNING:** Care must be taken to ensure the liquid does NOT come into contact with any part of the operators body. Chemicals may cause injury to the operator.

### To adjust the dose.

Loosen the dose adjuster lock nut (item 19). Depress lever to take pressure off the dose adjuster screw (item 18), adjust the dose adjuster screw in or out depending on the dose setting required. To set correct dose, align the front black piston with the appropriate cylinder marking. Once the piston is in the correct position, release pressure on lever and re-tighten the dose adjuster lock nut (item 19). (See calibration instructions).

### Calibration of the applicator.

As the graduation markings on the cylinder are for reference only, check the accuracy of the applicator with a calibrated measuring glass. To ensure repeatability, squirt 5 x 5ml doses into a calibrated glass. The level of fluid should be at the 25ml mark. If it is not, readjust the applicator following the steps above then perform the dose test again. If you have problems with dose accuracy contact the manufacturer or place of purchase.

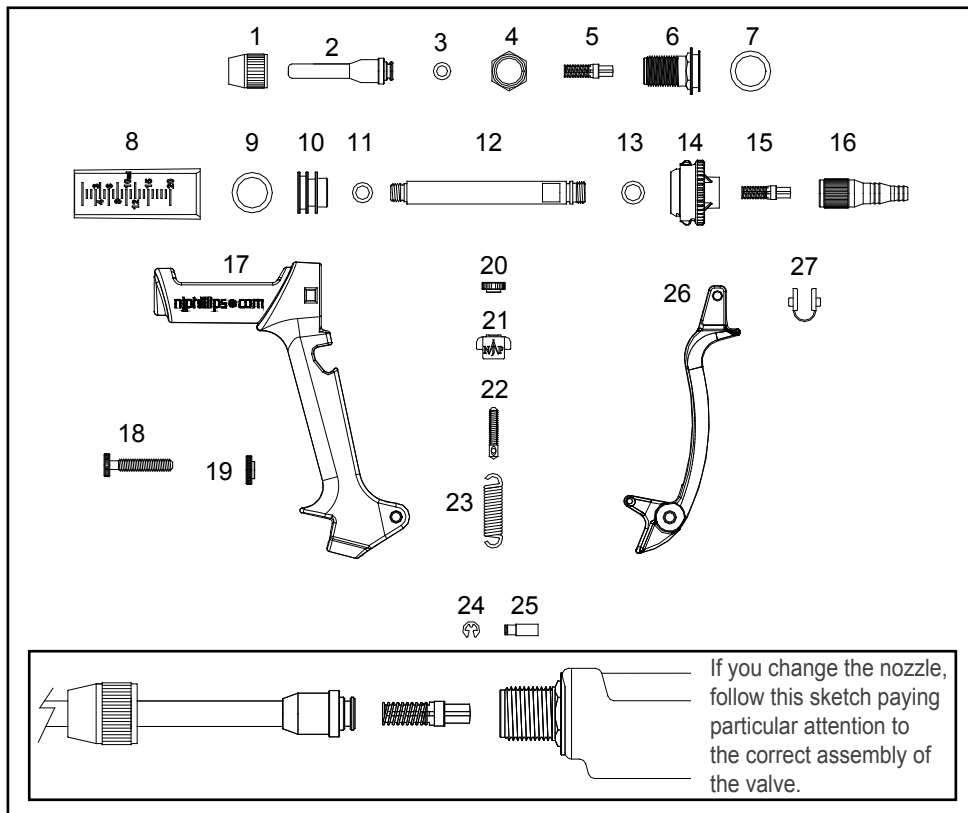
## CARE AND MAINTENANCE

To ensure continued high performance from this applicator, attention to cleanliness is essential. After each use, flush the applicator and feed tube thoroughly by pumping through a warm water detergent mix, followed by clean water. Remove the feed tube from the applicator and suck a small quantity of NJ Phillips Lubricant, into the cylinder by immersing the inlet fitting in the Lubricant and gently pumping the lever. If at any time the applicator should become sluggish in operation, maintenance by cleaning and lubrication should overcome the problem.

**IMPORTANT:** Do not flush with boiling water or leave the applicator exposed to sunlight unnecessarily. Prolonged temperatures in excess of 54° will damage certain components.

**LEGEND:**

1. Nozzle Nut, 2. Spray Stream Nozzle, 3. Nozzle Seal Ring, 4. Delivery Cage Lock Nut, 5. Delivery Valve Assembly, 6. Delivery Valve Cage, 7. Cylinder Seal Ring, 8. Cylinder, 9. Piston Seal Ring, 10. Piston, 11. Push Rod Seal Ring, 12. Push Rod, 13. Inlet Adaptor Seal Ring, 14. Push Rod Guide, 15. Inlet Valve Assembly, 16. Inlet Adaptor, 17. Handle, 18. Dose Adjustor Screw, 19. Dose Adjustor Lock Nut, 20. Adjustor Trunnion, 21. Adjustor Nut, 22. Spring Adjustor Spindle, 23. Return Spring, 24. Lever Pivot Pin Clip, 25. Lever Pivot Pin, 26. Lever, 27. Lever Pads.



**PLEASE ORDER BY KIT AND PART NAME**

**SPARE PARTS AVAILABLE:**

<u>KIT No.</u>	<u>PART NAME</u>	<u>INCLUDES ILLUSTRATION No.</u>
WX1444	Major Service Kit	3,5,7,8,9,11,13,15,22,26.
WX1364	Minor Service Kit	3,5,7,9,11,13,15,26.
WX1371	Spear	Not illustrated.

AS OUR POLICY IS ONE OF CONTINUOUS IMPROVEMENT THE MANUFACTURER RESERVES THE RIGHT TO ALTER THESE SPECIFICATIONS AT ANY TIME. ALL PRODUCTS PRODUCED BY NJ PHILLIPS PTY LIMITED, ARE IDENTIFIED BY A UNIQUE BATCH NUMBER. THIS IDENTIFICATION NUMBER IS AFFIXED TO THE PRODUCT TO ALLOW TRACEABILITY BY THE MANUFACTURER AND MUST NOT BE REMOVED IF PRODUCT INTEGRITY IS TO BE MAINTAINED.



**NJ PHILLIPS Pty Limited** ABN 36 000 082 002

**POSTAL ADDRESS:** LOCKED BAG 8 GOSFORD NSW 2250 AUSTRALIA  
**TELEPHONE:** (02) 4340 2044 **FAX:** (02) 4340 1991  
**EMAIL:** njp1@njphillips.com.au



**njphillips.com**  
 QL558-R4

MADE IN AUSTRALIA