



4ml Diesel Injector

njphillips.com

PLEASE READ CAREFULLY

This instrument has been specifically designed for administration of Diesel. Other chemical formulations may not be compatible with some components. The manufacturer will accept no responsibility for the consequences should this unit be used to administer any product other than Diesel.

INSTRUCTIONS FOR USE

1. Connect the feed tube to the inlet fitting and to the container. Wind the feed tube springs in an anti-clock-wise direction over the feed tube at these points. This will hold the feed tube in position and prevent it kinking.
2. ADJUSTING THE DOSE. There are three dose settings on the gun, 1 ml, 2ml and 4 ml. Select the appropriate dose by rotating the dose selection ring in either direction until the required dose (in mls) is showing at the top of the gun.
3. PRIMING THE GUN. To prime the gun, select the 4ml dose, point the nozzle vertically upwards, and begin priming by squeezing the trigger until liquid appears in the chamber. Carefully squeeze the trigger once more to expel air from the chamber.

Note: The gun can only be primed at the 4ml dose setting.

WARNING:

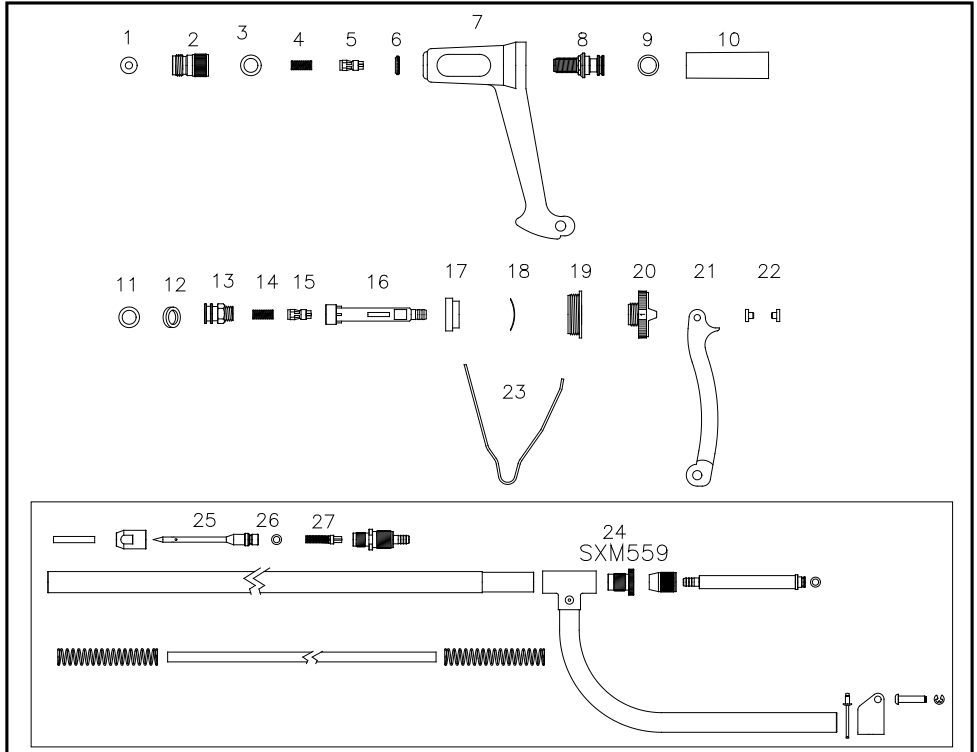
Care must be taken to ensure that the liquid does not come into contact with any part of the operators body. Chemicals may cause injury to the operator.

CARE AND MAINTENANCE

To ensure continued high performance from this instrument, attention to cleanliness is essential. After each use, flush the instrument and feed tube thoroughly by pumping through a warm detergent mix, followed by clean water. Remove the feed tube from the instrument and suck a small quantity of NJ Phillips Lubricant, into the cylinder by immersing the inlet fitting in the Lubricant, and gently pumping the lever. If at any time the instrument should become sluggish in operation, cleaning and lubrication should overcome this.

LEGEND:

1. Front Delivery Cage Washer, 2. Adaptor Spray Head Assembly, 3. Delivery Cage Seal Ring, 4. Delivery Valve Spring, 5. Delivery Valve, 6. Delivery Cage Lock Nut, 7. Handle, 8. Delivery Cage, 9. Piston Seal Ring, 10. Cylinder, 11. Seal Ring, 12. Lubricating Washer, 13. Piston, Inlet Valve Spring, 14. Inlet Valve Spring, 15. Pushrod Valve, 16. Pushrod, 17. Dose Adjustor Lock Ring, 18. Dose Adjustor Washer Spring, 19. Body Plug, 20. Dose Adjustor, 21. Lever, 22. Lever pad (2 per), 23. Return Spring, 24. Spear Nozzle Delivery Assembly, 25. Banana Spear Nozzle, 26. Seal Ring, 27. Valve & Spring Assembly.



PLEASE ORDER BY KIT AND PART NAME.

SPARE PARTS AVAILABLE:

<u>KIT No.</u>	<u>PART NAME</u>	<u>INCLUDES ILLUSTRATION No.</u>
WX1576	Major Kit (Hand Piece)	1,3,4,5,9,10,11,14,15.
WX482	Dose Adjustor Assembly	17,18,19,20.
WX1567	Spear Kit	25,26,27.

AS OUR POLICY IS ONE OF CONTINUOUS IMPROVEMENT THE MANUFACTURER RESERVES THE RIGHT TO ALTER THESE SPECIFICATIONS AT ANY TIME. ALL PRODUCTS PRODUCED BY NJ PHILLIPS PTY LIMITED, ARE IDENTIFIED BY A UNIQUE BATCH NUMBER. THIS IDENTIFICATION NUMBER IS AFFIXED TO THE PRODUCT TO ALLOW TRACEABILITY BY THE MANUFACTURER AND MUST NOT BE REMOVED IF PRODUCT INTEGRITY IS TO BE MAINTAINED.



NJ PHILLIPS Pty Limited ABN 36 000 082 002

POSTAL ADDRESS: LOCKED BAG 8 GOSFORD NSW 2250 AUSTRALIA
TELEPHONE: (02) 4340 2044 **FAX:** (02) 4340 1991
EMAIL: njp1@njphillips.com.au



MADE IN AUSTRALIA

njphillips.com

QL671