



5ml Variable Lever Action Injector

njphillips.com

This instrument is intended for administration of vaccine to livestock. As components in this instrument may be affected by solvents in some commonly used farm chemicals, no responsibility will be accepted by the manufacturer should the instrument be used with such products.

STERILIZATION INSTRUCTIONS

1. Connect the handpiece to the feed tube, fit the needle and lock.
2. Pump the handpiece until it is filled with water and then suspend the handpiece and feed tube in a container of water.
3. Boil the equipment for 10 to 20 minutes.
4. Remove the instrument from the container, wrap a cloth around the handle and pump dry.

NOTE: *It is neither necessary, nor desirable, to dismantle the handle, or any other component, before sterilizing.*

TO SET THE DOSE

1. Prime the instrument, preferably on a setting higher than 2ml, to ensure all air is removed from the system.
2. Turn the nut, located at bottom of the handle, until the required calibration on the connecting rod registers with the top of the slot through which it operates.
3. It is a wise precaution to check dosage accuracy with a measuring cylinder both before, and during, the vaccinating program.

CARE AND MAINTENANCE

To ensure trouble free operation the following procedure must be rigidly adhered to after each day's use.

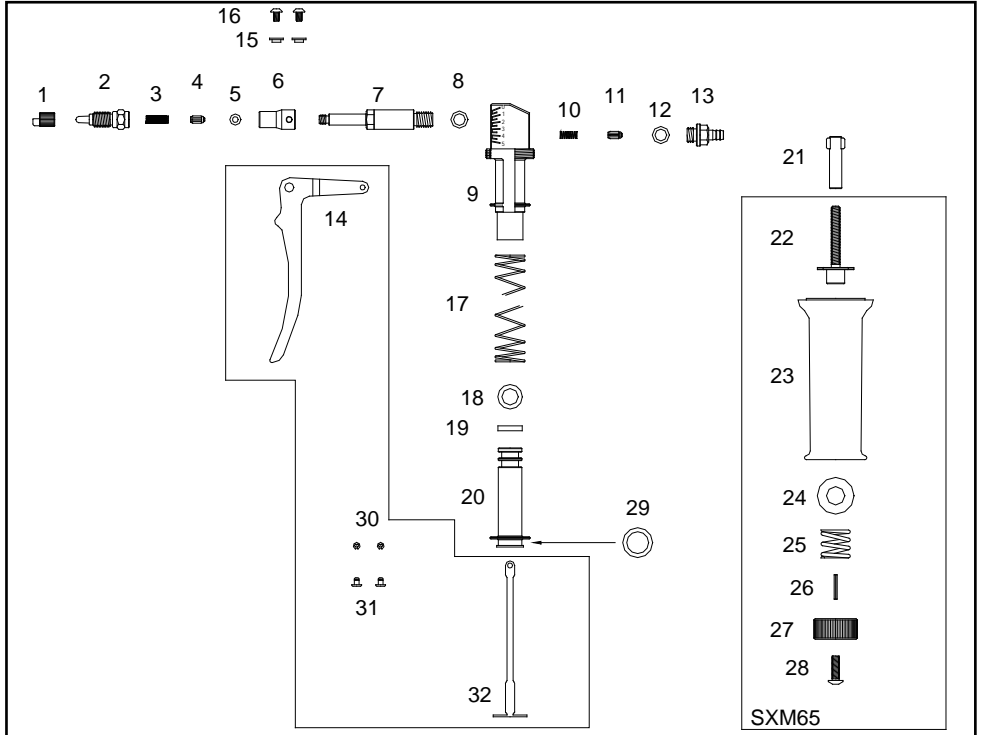
1. Remove all traces of serum or vaccine by thoroughly flushing out full equipment with water.
2. Repeat sterilization procedure.
3. Place a few drops of NJ Phillips Lubricant into each of the two slots which are located at the top face of the handle.
4. Draw a small quantity of NJ Phillips Lubricant into the hand piece through the inlet fitting.

NOTE: *It is not necessary to unscrew the handle for cleaning or lubrication. If, for some reason, the handle must be removed the procedure outlined below should be followed.*

1. Set the dose to 5ml.
2. Unscrew the handle.
3. The piston may now be removed by springing the connecting rods off the lever.
4. To replace the handle, make sure the thread is properly engaged. The handle should screw on easily. Do not force as this will only strip the thread. Screw the handle to the shoulder. Do not over tighten. The top surface of the handle will be slightly higher than the metal surface when the handle is correctly located.

LEGEND:

1. Needle Nut 2. Needle Mount 3. Delivery Valve Spring 4. Delivery Valve 5. Seal Ring 6. Body Fitting Collar 7. Body 8. Inlet Adaptor Seal Ring 9. Body Post 10. Inlet Valve Spring 11. Inlet Valve 12. Inlet Adaptor Seal Ring 13. Inlet Adaptor 14. Lever 15. Lever Assembly Bush 16. Button Socket Screw 17. Return Spring 18. Seal Ring 19. Lubricating Washer 20. Piston 21. Dose Adjustor Key 22. Dose Adjustor Screw 23. Handle 24. Washer 25. Dose Adjustor Spring 26. Spring Pin 27. Dose Adjustor Nut 28. Button Socket Screw 29. Connecting Rod Assembly Seal Ring 30. Circlip 31. Circlip Pin 32. Connecting Rod.



PLEASE ORDER BY KIT AND PART NAME

SPARE PARTS AVAILABLE:

KIT No.	PART NAME	ILLUSTRATION No.
WX1018	Lever Assembly	14,15,16.
WX1186	Body & Inlet Assembly	5,6,7,8,9,10,11,13.
WX1021	Handle Assembly	21,SXM65.
WX234	Piston Assembly	18,19,20.
WX811A	Needle Mount Assembly	1,2,3,4,5.
WX1023	Connecting Rods And Spring	17,32.
WX1187	Service Kit	3,4,5,8,10,11,17,19.

AS OUR POLICY IS ONE OF CONTINUOUS IMPROVEMENT THE MANUFACTURER RESERVES THE RIGHT TO ALTER THESE SPECIFICATIONS AT ANY TIME. ALL PRODUCTS PRODUCED BY NJ PHILLIPS PTY LIMITED, ARE IDENTIFIED BY A UNIQUE BATCH NUMBER. THIS IDENTIFICATION NUMBER IS AFFIXED TO THE PRODUCT TO ALLOW TRACEABILITY BY THE MANUFACTURER AND MUST NOT BE REMOVED IF PRODUCT INTEGRITY IS TO BE MAINTAINED.

	<h2>NJ PHILLIPS Pty Limited</h2> <p>ABN 36 000 082 002</p>		
	<p>POSTAL ADDRESS: LOCKED BAG 8 GOSFORD NSW 2250 AUSTRALIA</p>		
	<p>TELEPHONE: +61 2 4340 2044</p>	<p>FAX: +61 2 4340 1991</p>	
	<p>EMAIL: njp1@njphillips.com.au</p>		

MADE IN AUSTRALIA

njphillips.com

QL714