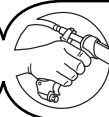


Spares Assembly Instructions



This kit contains spare parts for old models and the new model 60ml Applicator.

Identify the version you have by the different coloured adaptor.



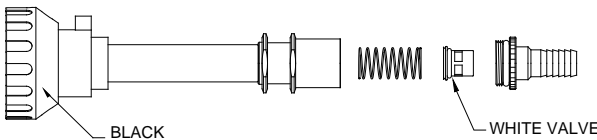
ADAPTOR

BLACK = PRE-2009

BLUE = POST-2009

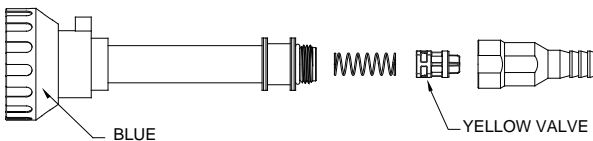
PRE-2009 APPLICATORS

These applicators have a white inlet valve with a black o-ring. It is located in the direction as shown with the large spring



POST-2009 APPLICATORS

The new HFV (High Flow Valve) is located as shown with the spring that fits inside the valve body.

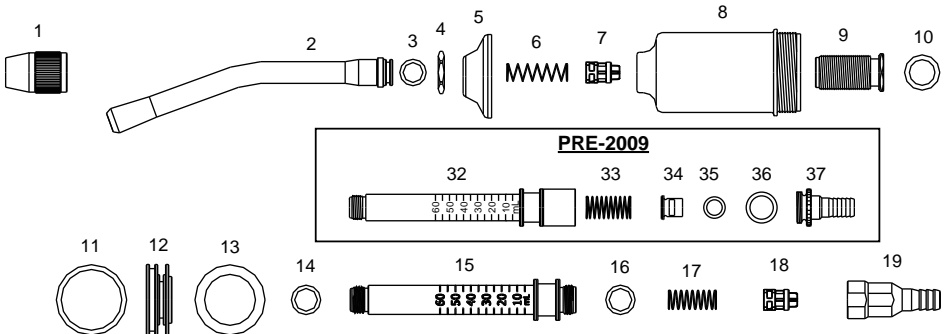


THIS KIT MAY CONTAIN:

KIT No.	PART NAME	INCLUDES ILLUSTRATION No.
WX1326	Minor Service Kit	6,7,11,12,13,17,33,34,35.
WX1327	Major Service Kit	6,7,8,11,12,13,17,33,34,35.

KIT COMPONENTS

DESCRIPTION	ILLUSTRATION No.	QTY
Delivery Valve Spring	6	1
Delivery Valve	7	2
Cylinder	8	1
Piston Seal Ring	11	1
Piston	12	1
Lubricating Washer	13	1
Inlet Valve Spring	17	1
Inlet Valve Spring	33	1
Inlet Valve	34	1
Inlet Valve Seal Ring	35	1



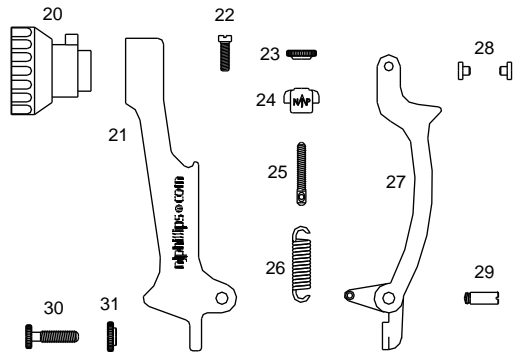
DRAWINGS TO SCALE (100%)

6

17

33

PLACE THE SPRING FROM THE KIT OVER THE DRAWINGS TO IDENTIFY THE PART YOU REQUIRE.



NJ PHILLIPS PTY LTD ABN 36 000 082 002
ADDRESS: LOCKED BAG 8, GOSFORD, NSW 2250 AUSTRALIA
TELEPHONE: +61 2 4340 2044 **FAX:** +61 2 4340 1991
EMAIL: njp1@njphillips.com.au **MADE IN AUSTRALIA**



AS OUR POLICY IS ONE OF CONTINUOUS IMPROVEMENT THE MANUFACTURER RESERVES THE RIGHT TO ALTER THESE SPECIFICATIONS AT ANY TIME. ALL PRODUCTS PRODUCED BY NJ PHILLIPS PTY LIMITED, ARE IDENTIFIED BY A UNIQUE BATCH NUMBER. THIS IDENTIFICATION NUMBER IS AFFIXED TO THE PRODUCT TO ALLOW TRACEABILITY BY THE MANUFACTURER AND MUST NOT BE REMOVED IF PRODUCT INTEGRITY IS TO BE MAINTAINED.
 PAD87 | QM588-R2