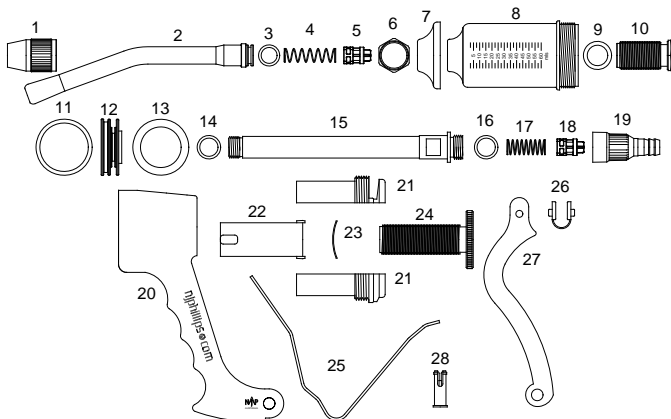




- New HFV technology for faster refill and chemical resistance.
- Compatible with most drenches on the market.
- New style piston provides easy assembly and service.
- Variable dose settings.



### PARTS BREAKDOWN



- |                                     |   |
|-------------------------------------|---|
| 1. Nozzle Lock Nut (SN107)          | 16. Inlet Adaptor Seal Ring (SP176)     |
| 2. Cattle Nozzle (TRXN116A)         | 17. Inlet Valve Spring (SP285-A)        |
| 3. Nozzle Seal Ring (SP220)         | 18. Inlet Valve (SH1446/C4)             |
| 4. Delivery Valve Spring (SP1200-A) | 19. Inlet Adaptor (SH314)               |
| 5. Delivery Valve (SH1446/C4)       | 20. Handle (SH1074)                     |
| 6. Delivery Cage Lock Nut (SN456)   | 21. Body Plug (SH272)                   |
| 7. Cylinder Shield Cap (SN408)      | 22. Dose Adjustor Sleeve (SH250)        |
| 8. Cylinder (SH1079)                | 23. Dose Adjustor Washer Spring (SP197) |
| 9. Delivery Cage Seal Ring (SP98)   | 24. Dose Adjustor (SH273)               |
| 10. Delivery Cage (SN455)           | 25. Return Spring (SP592)               |
| 11. Piston O-ring (SP465)           | 26. Lever Pad (SP1210)                  |
| 12. Piston (SH901)                  | 27. Lever (SH198/G4)                    |
| 13. Lubricating Washer (SF33)       | 28. Lever Pin (SH200)                   |
| 14. Piston Seal Ring (SP176)        |   |
| 15. Push Rod (SH201)                |   |

MODEL	DOSE RANGE	INCREMENTS
60ml	2.5ml – 60ml	2.5ml

KIT NO.	PART NAME	PART NO.
WX1330	Minor Service Kit	3,4,5,9,11,12,13,14,16,17,18.
WX1331	Major Service Kit	3,4,5,8,9,11,12,13,14,16,17,18,26,28.

PLEASE ORDER BY KIT AND PART NAME



Customise this instrument with your brand colour and logo. Contact us for details.



**njphillips.com**  
Our expertise is in your hands.

LOCKED BAG 8, GOSFORD NSW, AUSTRALIA 2250

P +61 2 4340 2044 F +61 2 4340 1991 | E njp1@njphillips.com.au