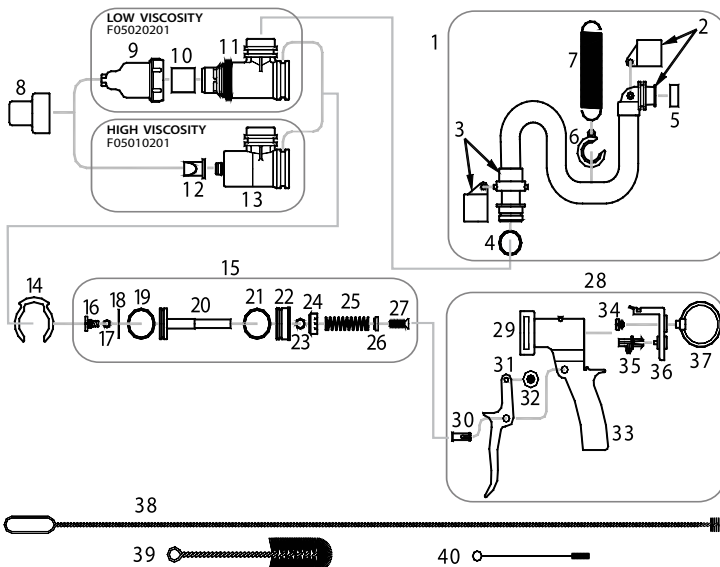




- Connects to bag in box.
- Easy to use lever action style.
- Accurate portion control.
- Airtight system.
- Quick change over times from canisters or squeeze bottles.
- Easy disassembly.
- Flexible hose for easy movement.
- Colour coded handles for easy identification.
- Seals variable to suit different condiments.
- Variable fixed dose.



## PARTS BREAKDOWN



- |   |  |
|---|--|
| 1. Dispensing Hose Assembly             | 21. Cylinder Plug Seal Ring              |
| 2. Bag Adaptor                          | 22. Cylinder Plug                        |
| 3. Applicator Adaptor                   | 23. Cylinder Plug Bush Seal Ring         |
| 4. Applicator Adaptor Seal Ring         | 24. Cylinder Plug Bush                   |
| 5. Bag Adaptor Tube Seal                | 25. Piston Return Spring                 |
| 6. Hose Supporting Clip                 | 26. Piston Return Spring Retainer        |
| 7. Hose Support Spring                  | 27. Piston Return Spring Retaining Screw |
| 8. Cylinder Cap                         | 28. Handle Assembly                      |
| 9. Front Nozzle (Low Viscosity)         | 29. Handle Adaptor                       |
| 10. Check Valve (Low Viscosity)         | 30. Lever Pin                            |
| 11. Cylinder (Low Viscosity)            | 31. Lever                                |
| 12. Delivery Valve Tip (High Viscosity) | 32. Lever Roller                         |
| 13. Cylinder (High Viscosity)           | 33. Handle                               |
| 14. Cylinder Retaining Clip             | 34. Hanging Ring Screw                   |
| 15. Piston Assembly                     | 35. Dose Stop                            |
| 16. Inlet Valve Retainer                | 36. Back Plate                           |
| 17. Valve Retainer Seal Ring            | 37. Hanging Ring                         |
| 18. Inlet Valve                         | 38. Hose Cleaning Brush                  |
| 19. Piston Seal Ring                    | 39. Cylinder Brush                       |
| 20. Piston                              | 40. Piston Brush                         |

KIT NO.	PART NAME	PART NO.
WX1348	Low Viscosity Applicator Service Kit	10,17,18,19,21,23.
WX1283	High Viscosity Applicator Service Kit	12,17,18,19,21,23.
WX1350	Hose Cleaning Brush	38,39,40.
SXM465	Dispensing Hose Assembly (1200mm)	1.

PLEASE ORDER BY KIT AND PART NAME



Customise this instrument with your brand colour and logo. Contact us for details.



**njphillips.com**  
Our expertise is in your hands.

LOCKED BAG 8, GOSFORD NSW, AUSTRALIA 2250

P +61 2 4340 2044 F +61 2 4340 1991 | E njp1@njphillips.com.au