

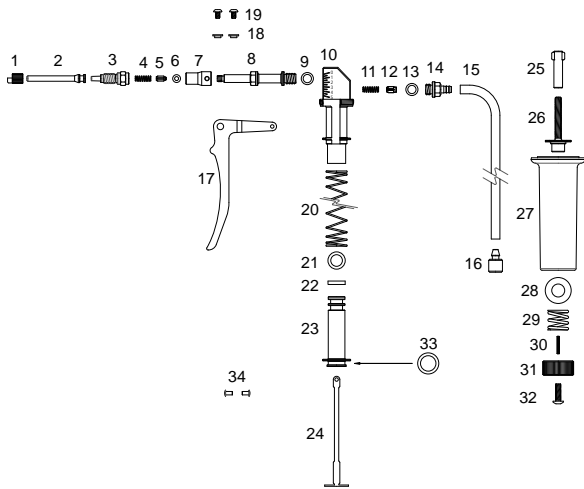


- Ergonomic design.
- Extremely accurate.
- Easily adjusted.
- Silicone tips.
- **ARTG No:** 145575
- **SP1370B** Silicone tip helps protect the patients ear during treatment



SP1370B

### PARTS BREAKDOWN



- |                                     |   |   |
|-------------------------------------|---|---|
| 1. Needle Nut (SN45/N)              | 19. Button Socket                             | 25. Feed Tube                                 |
| 2. Ear Nozzle (SN491)               | Screw Bush (SP1286)                           | 26. Dose Adjustor Screw (SM743)               |
| 3. Needle Mount (SN373/N)           | 20. Return Spring (PP499)                     | 27. Handle (SH1623/J2)                        |
| 4. Delivery Valve Spring (SP41)     | 21. Piston Seal Ring (SP323)                  | 28. Dose Adjustor Washer (SP1287)             |
| 5. Delivery Valve (WX1513)          | 22. Lubricating Washer (SF26)                 | 29. Dose Adjustor Spring (SP1279)             |
| 6. Seal Ring (SP66)                 | 23. Lever-Action Piston (SM741)               | 30. Spring Pin (SP1320)                       |
| 7. Body Fitting Collar (SN546)      | 24. Con Rod-Spring (SP1278)                   | 31. Dose Adjustor Nut (SN551)                 |
| 8. Body (SN547)                     | 25. Dose Adjustor Key (SM742)                 | 32. Button Socket Screw (SP1290)              |
| 9. Body Seal Ring (SP801)           | 26. Dose Adjustor Screw (SM743)               | 33. Connecting Rod Assembly Seal Ring (SP341) |
| 10. Body Post (SN548)               | 27. Handle (SH1623/J2)                        | 34. Rivet (SP1413)                            |
| 11. Inlet Valve Spring (BP235)      | 28. Dose Adjustor Washer (SP1287)             |   |
| 12. Inlet Valve (SH1579/C4)         | 29. Dose Adjustor Spring (SP1279)             |   |
| 13. Inlet Adaptor Seal Ring (SP801) | 30. Spring Pin (SP1320)                       |   |
| 14. Inlet Adaptor (SN549)           | 31. Dose Adjustor Nut (SN551)                 |   |
| 15. Feed Tube (SH66)                | 32. Button Socket Screw (SP1290)              |   |
| 16. Draw Off Weight (SN490)         | 33. Connecting Rod Assembly Seal Ring (SP341) |   |
| 17. Lever (PR485A)                  | 34. Rivet (SP1413)                            |   |
| 18. Lever Assembly Bush (SN550)     |   |   |

MODEL	DOSE RANGE	INCREMENTS
5ml	0.5ml – 5ml	0.5ml

KIT NO.	PART NAME	PART NO.
WX1494	Service Kit	4,5,6,9,11,12,13,21,22.
WX1495	Feed Tube Assembly Kit	15,16.
SP1370B	Silicone Tips - pack of 25	Shown in picture above.

PLEASE ORDER BY KIT AND PART NAME

### DISTRIBUTION NETWORK

<p><b>AUSTRALIA</b>  <b>NSW / ACT</b>  <b>D.V.M. Medical Supplies</b>          7 Doyle Avenue, Unanderra N.S.W 2526          Contact: Mr. Bob Glover          Tel: 1800 10 10 33          Mob: 0412 095 186</p> <p><b>Medical Access Pty. Ltd.</b>          PO Box 149, Boorowa N.S.W 2586          Contact: Grant Cotter (Director)          Tel: (02) 6385 1200          Fax: (02) 6385 3127          Email: grant@medicalaccess.com.au          Web: medicalaccess.com.au</p> <p><b>VIC</b>  <b>Warner and Webster Pty. Ltd.</b>          273 Inkerman Street, St Kilda VIC 3182          Contact: Customer Service          Tel: (03) 9534 8039          Fax: (03) 9534 4079</p> <p><b>QLD</b>  <b>Medical And Surgical Requisites Pty. Ltd.</b>          33 Fulcrum Street, Richlands, Brisbane QLD 4077          Contact: MEDI + Plus - Service Advisor          Tel: (07) 3859 2900          Fax: (07) 3859 2995          Email: medical@medsurg.com.au</p>	<p><b>SA / NT</b>  <b>Mc Neil Surgical Pty Ltd.</b>          29-31 Magill Road, Stepney SA 5069          Tel: (08) 8363 0888          Fax: (08) 8363 2137</p> <p><b>WA</b>  <b>AMA Medical Products</b>          14 Stirling Highway, Nedlands WA 6909          Contact: Customer Service          Tel: (08) 9273 3022          Fax: (08) 9273 3017</p> <p><b>TAS</b>  <b>Tasmanian Medical Supplies</b>          40 Brisbane Street, Hobart TAS 7000          Contact: Mr. Ben Jones          Tel: (03) 623 49777          Fax: (03) 623 48452</p> <p><b>NEW ZEALAND</b>  <b>Esteem Healthcare Ltd</b>          PO Box 18-040, Glen Innes          24B Morrin Road, Tamaki Auckland NZ          Contact: Mr. Brent Mitchell          Tel: 0800 427 968          Fax: 0800 337 833</p>
--	--



Customise this instrument with your brand colour and logo. Contact us for details.



LOCKED BAG 8, GOSFORD NSW, AUSTRALIA 2250

P +61 2 4340 2044 F +61 2 4340 1991 | E njp1@njphillips.com.au