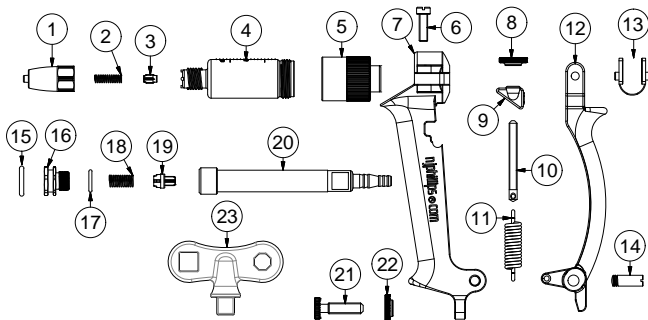




- Robust and highly accurate design.
- Clear cylinder for easy dose setting.
- Ergonomic design for superior comfort.
- Service Kits available.



## PARTS BREAKDOWN



- |                                 |                                 |
|---------------------------------|---------------------------------|
| 1. MIM Nut (SXM619)             | 13. Lever Pad (SP1210)          |
| 2. Delivery Valve Spring (SP41) | 14. Lever Screw (SN16)          |
| 3. Delivery Valve (SH1579/C4)   | 15. Piston Seal Ring (SP1366)   |
| 4. Cylinder (SH1743)            | 16. Piston (SN430)              |
| 5. Cylinder Adaptor (SN431)     | 17. Push Rod Seal Ring (SP309)  |
| 6. Handle Clamp Screw (SP6/N)   | 18. Inlet Valve Spring (SP378)  |
| 7. Handle (SA61)                | 19. Inlet Valve (SH1580/C4)     |
| 8. Adjustor Nut (SN60/N)        | 20. Push Rod (SXM404)           |
| 9. Trunnion (SN14)              | 21. Dose Adjustor Screw (DN112) |
| 10. Spring Adjustor Pin (SN152) | 22. Lock Nut (SN12)             |
| 11. Return Spring (SP134)       | 23. Spanner (SH1724)            |
| 12. Lever (C15A5/G4)            |                                 |

MODEL	DOSE RANGE	INCREMENTS	CODE
5ml	0.5ml – 5ml	0.5ml	PAS1099
Also available in:			
10ml	0.5ml – 10ml	0.5ml	PAS954

### PAS1099 (5ml)

KIT NO.	PART NAME	PART NO.
WX1499	Major Service Kit	1,2,3,4,13,15,17,18,19,23.
WX1235	Minor Service Kit	2,3,13,15,17,18,19,23.

PLEASE ORDER BY KIT AND PART NAME

### PAS954 (10ml)

KIT NO.	PART NAME	PART NO.
WX1236	Major Service Kit	Not illustrated.
WX1235	Minor Service Kit	Not illustrated.

PLEASE ORDER BY KIT AND PART NAME



Customise this instrument with your brand colour and logo. Contact us for details.



**njphillips.com**  
Our expertise is in your hands.

LOCKED BAG 8, GOSFORD NSW, AUSTRALIA 2250

P +61 2 4340 2044 F +61 2 4340 1991 | E njp1@njphillips.com.au