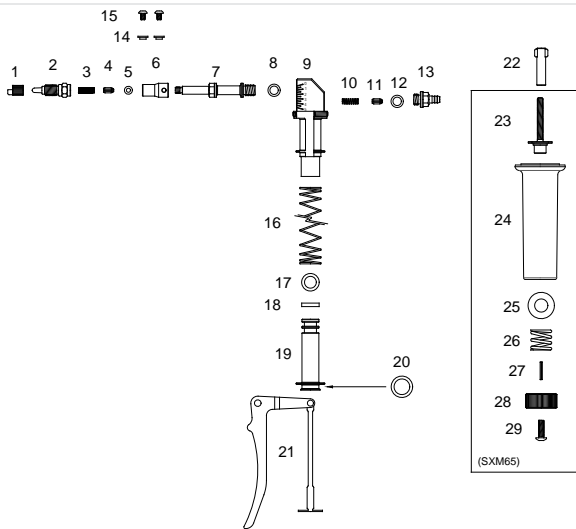




- Extremely robust, reliable and durable.
- Comfortable and easy to use lever-action.
- Easily adjusted to your required dose.
- Easy to read dose scale.
- Wide range of service kits available.



## PARTS BREAKDOWN



- |                           |             |                          |             |
|---------------------------|-------------|--------------------------|-------------|
| 1. Needle Nut             | (SN45/N)    | 16. Return Spring        | (PP499)     |
| 2. Needle Mount           | (SN373/N)   | 17. Piston Seal Ring     | (SP323)     |
| 3. Delivery Valve Spring  | (SP41)      | 18. Lubricating Washer   | (SF26)      |
| 4. Delivery Valve         | (WX1513)    | 19. Piston               | (SM741)     |
| 5. Needle Mount Seal Ring | (SP66)      | 20. Retaining Ring       | (SP341)     |
| 6. Collar Body Fitting    | (SN546)     | 21. Lever Assembly       | (SXM577)    |
| 7. Body                   | (SN547)     | 22. Dose Adjustor Key    | (SM742)     |
| 8. Body Seal Ring         | (SP801)     | 23. Dose Adjustor Screw  | (SM743)     |
| 9. Body Post              | (SN548)     | 24. Handle               | (SH1263/G4) |
| 10. Inlet Valve Spring    | (BP235)     | 25. Washer               | (SP1287)    |
| 11. Inlet Valve           | (SH1579/C4) | 26. Dose Adjustor Spring | (SP1279)    |
| 12. Seal Ring             | (SP801)     | 27. Spring Pin           | (SP1320)    |
| 13. Inlet Adaptor         | (SN549)     | 28. Dose Adjustor Nut    | (SN551)     |
| 14. Lever Bush            | (SN550)     | 29. Button Socket Screw  | (SP1290)    |
| 15. Button Socket Screw   | (SP1286)    |                          |             |

MODEL	DOSE RANGE	INCREMENTS
5ml	0.5ml – 5ml	0.5ml

KIT NO.	PART NAME	PART NO.
WX1018	Lever Assembly	21.
WX1186	Body & Inlet Assembly	5,6,7,8,9,10,11,12,13.
WX1021	Handle Assembly	22,23,24,25,26,27,28,29.
WX234	Piston Assembly	17,18,19.
WX811A	Needle Mount Assembly	1,2,3,4,5.
WX1023	Connecting Rods And Spring	16,21.
WX1187	Service Kit	3,4,5,8,11,12,15,16,17,18.
KIT-PAS39	Spares Kit	3,4,5,8,10,11,12,17,18.

PLEASE ORDER BY KIT AND PART NAME



Customise this instrument with your brand colour and logo. Contact us for details.



**njphillips.com**  
Our expertise is in your hands.

LOCKED BAG 8, GOSFORD NSW, AUSTRALIA 2250

P +61 2 4340 2044 F +61 2 4340 1991 | E njp1@njphillips.com.au