

Plastic 'V-Grip' Injector Range



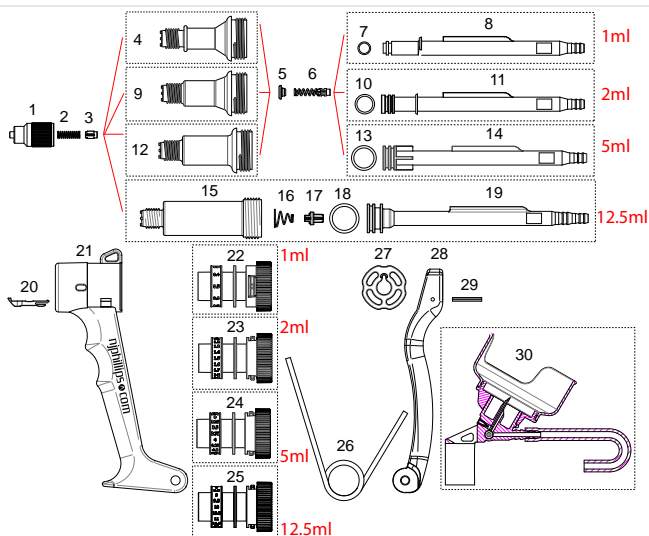
- Lightweight design for use with a wide variety of injectable solutions.
- Ripple-grip handle for superior comfort.
- Easy to disassemble and clean.
- Adjust dose without losing any product.
- Easily converts to a Bottle Mount.



MODEL	DOSE RANGE	INCREMENTS	CODE
1ml	0.1ml – 1ml	0.1ml	PAS1379
2ml	0.1ml – 2ml	0.1ml	PAS1380
5ml	0.25ml – 5ml	0.25ml	PAS1381
12.5ml	3ml – 12.5ml	0.5ml	PAS1382

12.5ml comes with dual barb 3/16" (4mm) and 1/4" (6mm) inlet fitting.

PARTS BREAKDOWN

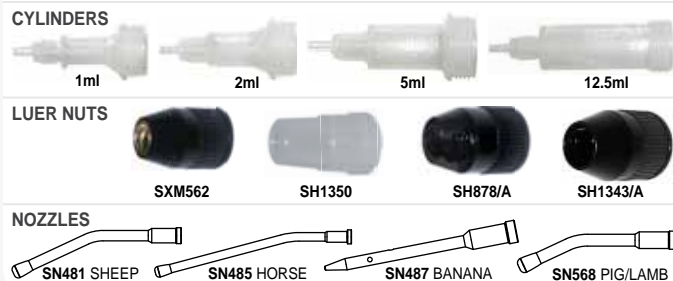


1. Luer Needle Nut (SXM619)	17. Inlet Valve (SH1633/G8)
2. Delivery Valve Spring (SP41)	18. 12.5ml Piston Seal Ring (SP768)
3. Delivery Valve (SH1579/C4)	19. 12.5ml Push Rod & Piston (SH1675)
4. 1ml Cylinder (SH1644)	20. Dose Adjuster Retainer (SH1627)
5. Piston Plug Insert (SH1028)	21. Handle (SH1426)
6. Valve Spring (SH1263/C4)	22. 1ml Dose Adjustor (SH1673)
7. 1ml Piston Seal Ring (SP200)	23. 2ml Dose Adjustor (SH1671)
8. 1ml Push Rod & Piston (SH1674)	24. 5ml Dose Adjustor (SH1669)
9. 2ml Cylinder (SH1645)	25. 12.5ml Dose Adjustor (SH1625)
10. 2ml Piston Seal Ring (SP1245)	26. Return Spring (SP1412)
11. 2ml Push Rod & Piston (SH1672)	27. Push Rod Guide (SH1626)
12. 5ml Cylinder (SH1647)	28. Lever (SH1086/G4)
13. 5ml Piston Seal Ring (SP340)	29. Pin Roll Spring (SP1437)
14. 5ml Push Rod & Piston (SH1670)	30. Quick Release Bottle Attachment (SXM622)
15. 12.5ml Cylinder (SH1649)	
16. Conical Spring (SP1425)	

KIT NO.	PART NAME	PART NO.
WX1754	Major Service Kit – 1ml	2,3,4,5,6,7.
WX1755	Major Service Kit – 2ml	2,3,5,6,9,10.
WX1756	Major Service Kit – 5ml	2,3,5,6,12,13.
WX1757	Major Service Kit – 12.5ml	2,3,15,16,17,18.

PLEASE ORDER BY KIT AND PART NAME

CONFIGURATIONS TO SUIT STANDARD LUER NUT



CONFIGURATIONS TO SUIT MIM NUT



ACCESSORIES



Customise this instrument with your brand colour and logo. Contact us for details.



njphillips.com
Our expertise is in your hands.

LOCKED BAG 8, GOSFORD NSW, AUSTRALIA 2250

P +61 2 4340 2044 F +61 2 4340 1991 | E njp1@njphillips.com.au